

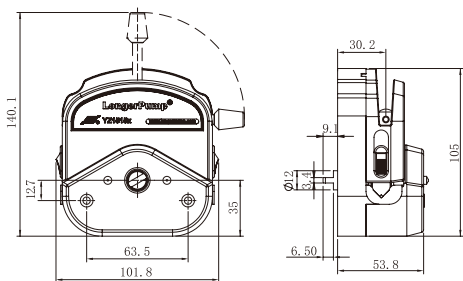
Easy-load Pump Head

Max. Flow Rate



YZ1515x, YZ2515x

Classic design, simple operation, wide flow range.



PPS housing
(Excellent chemical resistance)

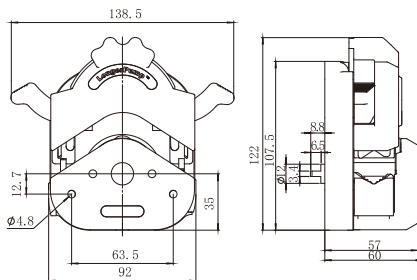


PESU

YZII15, YZII25

Patented Design
Patent Number: 200620026529.1

Based on the classic design of YZ1515x/YZ2515x, YZII15/YZII25 have a special tubing retention linkage which makes tubing loading easily and rapidly. YZII25 accepts more suitable tubing than YZ2515x and provides a wider flow range.



Max. Flow Rate



PESU

Tubing Loading Comparison



Tubing clamer needs to be lifted manually
YZ1515X/YZ2515X



Tubing clamer can be automatically opened
YZII15/YZII25

Model	Product Code	Roller Number	Roller Material	Housing Material	Speed (rpm)	Tubing	Max. Flow Rate (mL/min)	Weight (kg)
YZ1515x-A	05.01.52A	3	Stainless steel	PESU	≤ 600	13" 14" 19" 16"	2200	0.4
YZ1515x-B	05.01.52B	6				1450		
YZ1515x-C	05.01.52C	3		PPS		2200		
YZ1515x-D	05.01.52D	6				1450		
YZ2515x-A	05.01.53A	3		PESU		1600		
YZ2515x-C	05.01.53C			PPS				
YZII15	05.01.55A	3	Stainless steel	PESU	≤ 600	13" 14" 19" 16"	2200	0.35
YZII25	05.01.56A					15" 24" 35" 36"	3000	